

INDICATOR DATA SHEET

Indicator: Infant mortality rate

Definition:

This indicator is defined by the number of deaths of children under one year old over a period of time, per 1000 live births during the same period.

Category: Population and
Socio-economic indicators

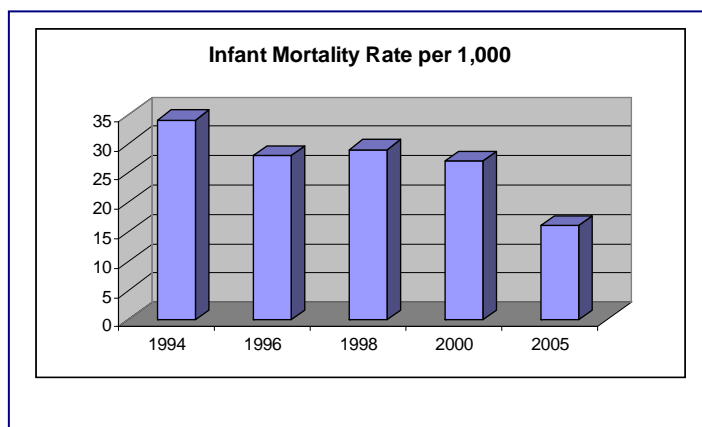
Theme: Standard of Living

Type: State

Unit: Number per 1000

| Data Needed | Source |
|---|---|
| Number of deaths of children less than one year old | Ministry of Public Health Central Administration of Statistics |

Frequency for Updating:
Yearly



| Year | Infant mortality rate in 1000 infants by Mouhafaza | | | | | |
|-------------------|--|------------|------------|-------|------------|-------|
| | Beirut | Mount Leb. | South Leb. | Bekaa | North Leb. | Total |
| 1994 ¹ | | | | | | 34 |
| 1996 ¹ | 19.6 | 27.6 | 27.2 | 39.8 | 48.1 | 27.9 |
| 1998 ¹ | | | | | | 29 |
| 2000 ² | 21 | 19 | 34 | 40 | 37 | 27 |
| 2005 ³ | 39.2 | 6.4 | 22.5 | 31 | 11.1 | 16 |

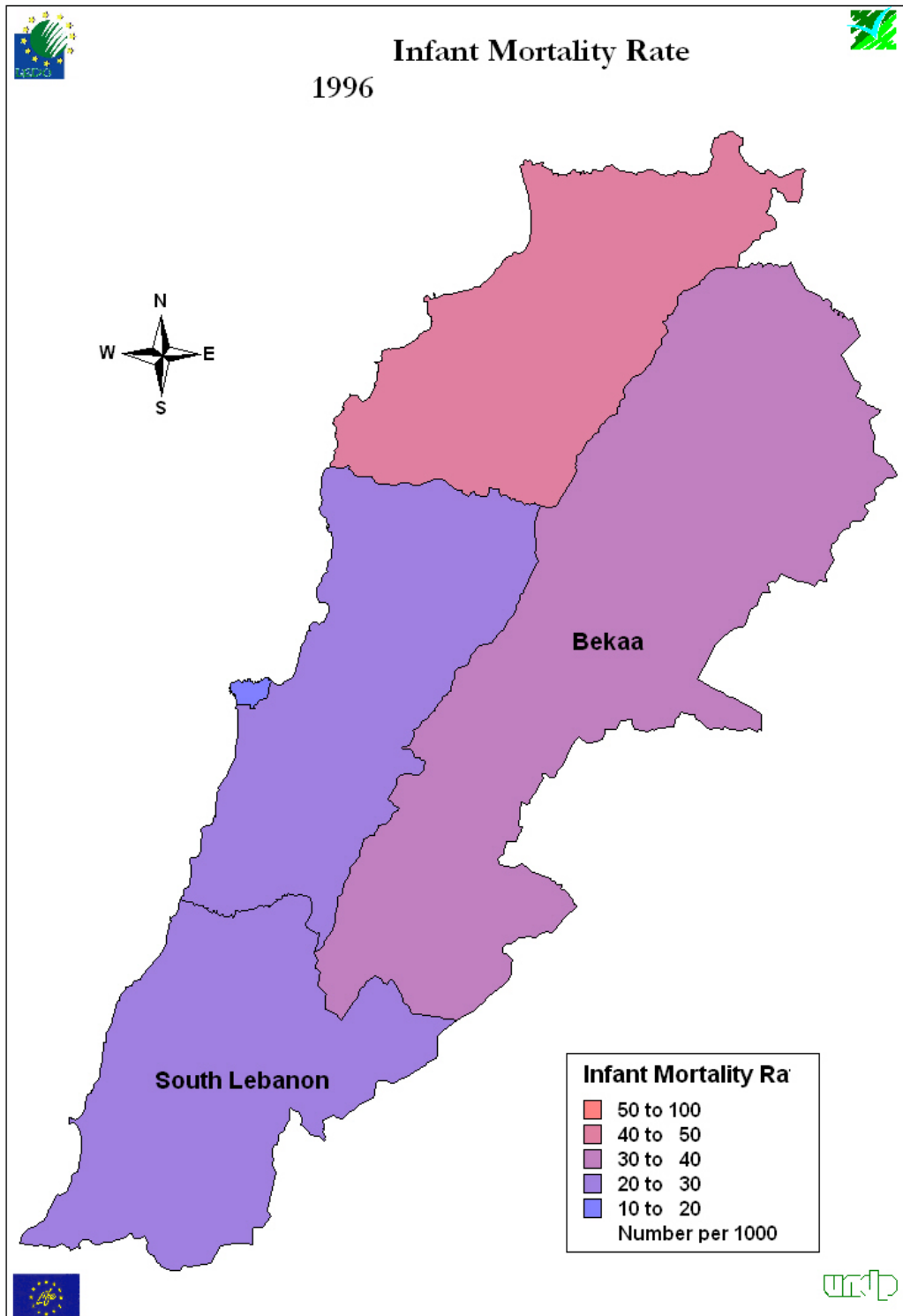
Source of data/year:

1- Common Country Assessment, UNDP, 1998

2- MICS 2001

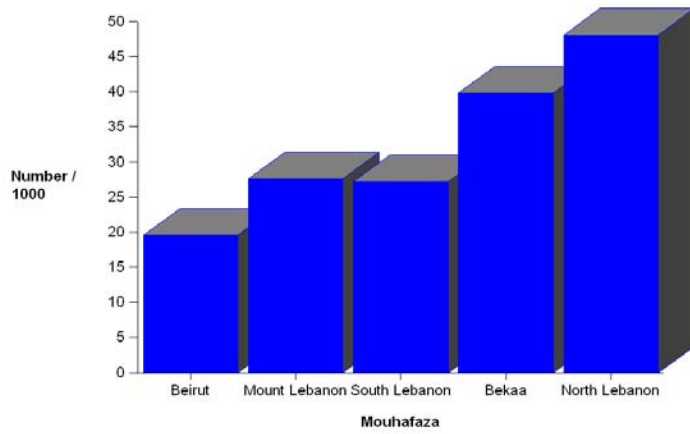
3- PAPFAM 2005

Geographic coverage: National





Infant Mortality Rate





Infant Mortality Rate

